

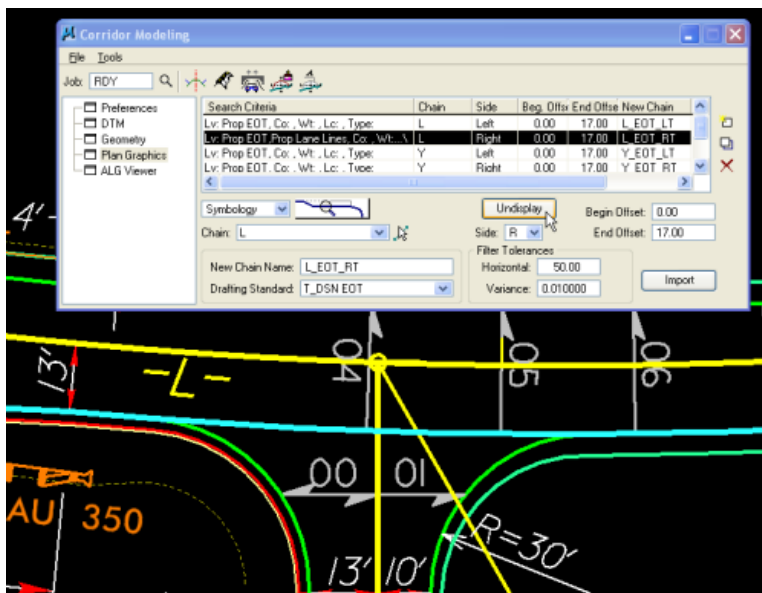
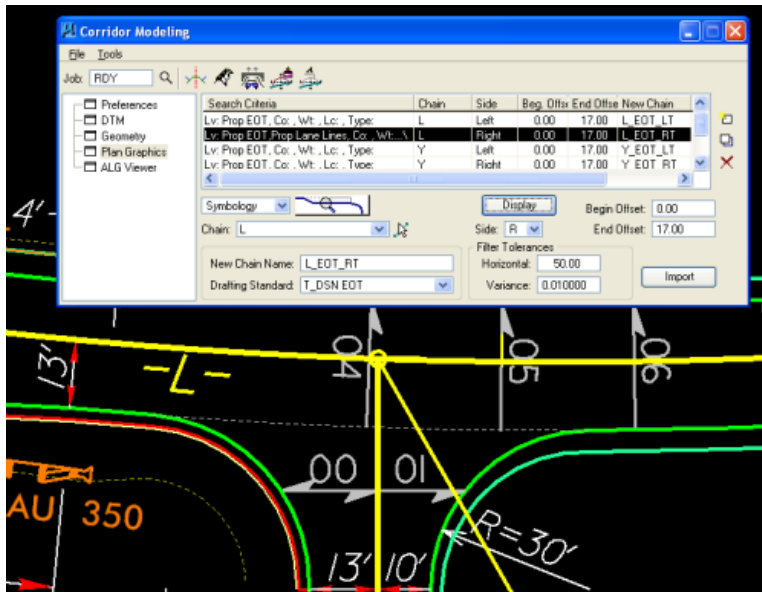
2_19 NEW INTERSECTION SHEAR LINE TEMPLATE

Question:

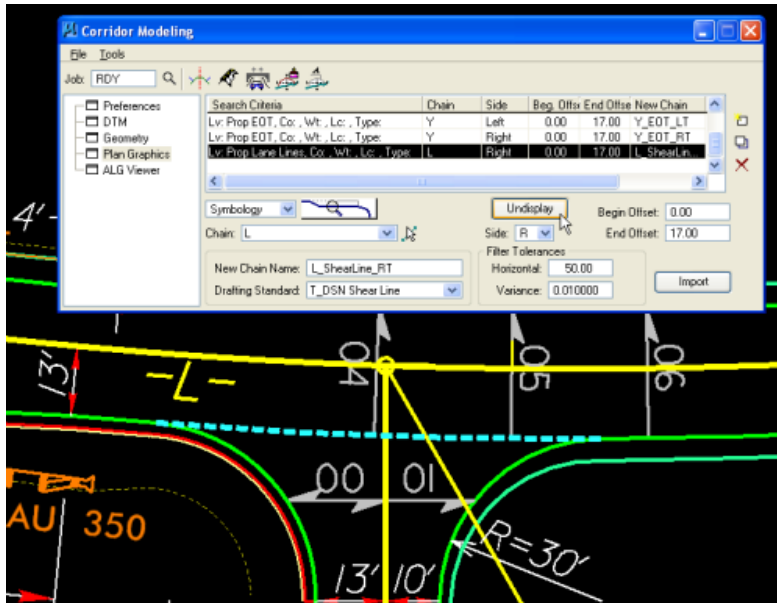
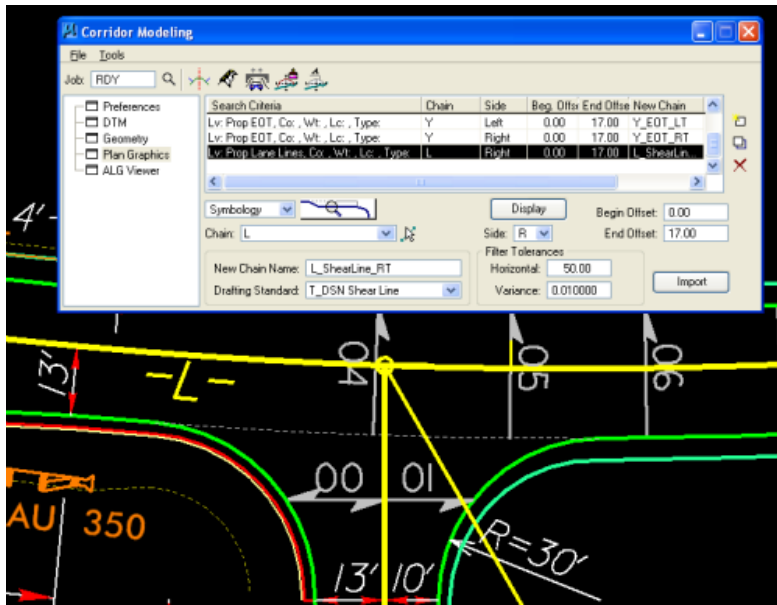
How do I use the new intersection shear line feature built in the templates?

Answer:

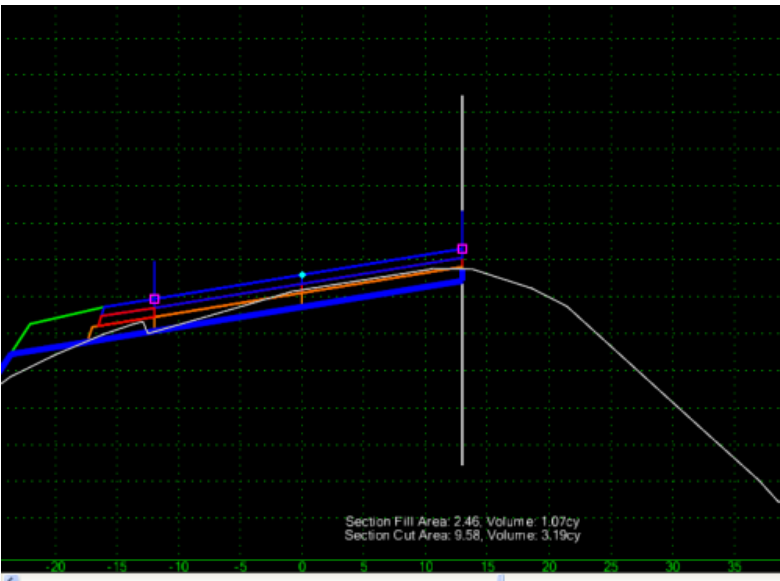
Store the proposed EOT using both the symbology for the Prop EOT and EOT Dashed (across the intersection). The proposed EOT Dashed level can be any arbitrary level or scratch level used in the DSN file. Note the standard level is "Prop EOT Dash".



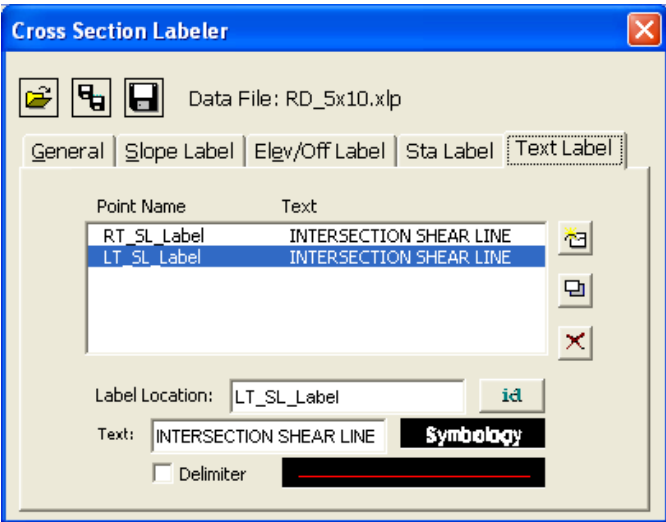
Next store only the same Prop EOT Dash level as a chain with the drafting standard "T_DSN Shear Line" in the areas of the intersection.

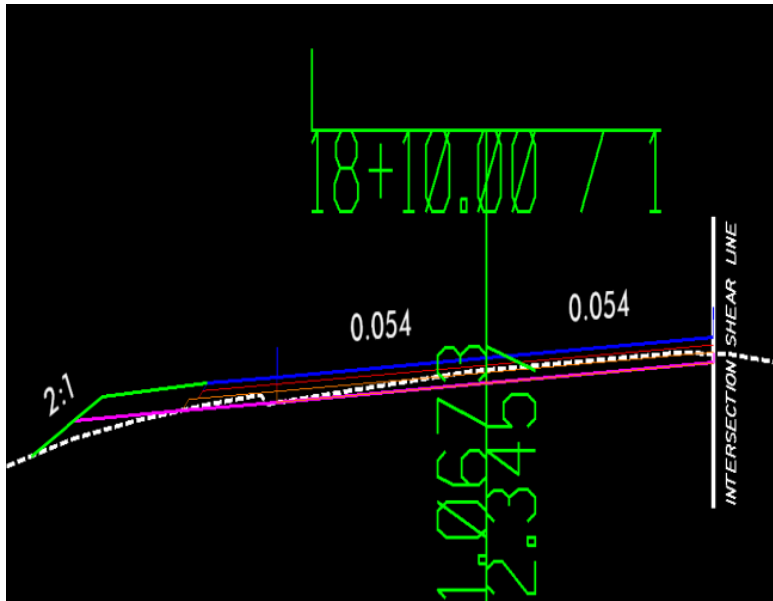


The road templates are design to seek the shear line graphics. If it is located within half a foot on either side of the proposed EOT, then the intersection shear line components and end conditions are displayed.

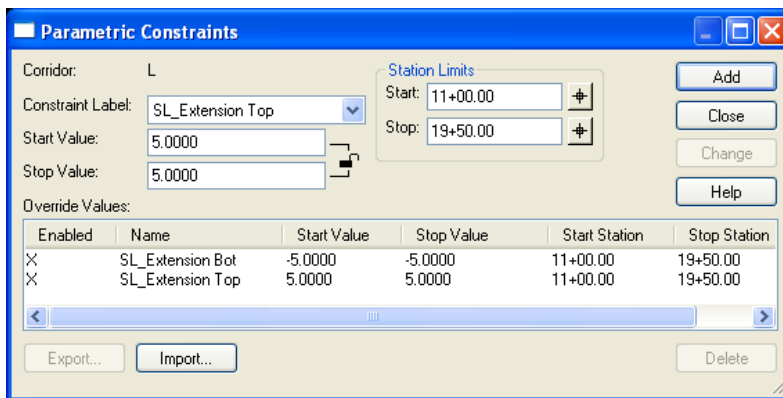


The XSLabeler has been modified to automatically label intersection shear lines.





The intersection shear line feature has two parametric constraints to control the length of the shear line. Below are the names and default values.



Note that this intersection shear line procedure is required for modeling at-grade intersections in 3D (coming soon) for SS2 Refresh and earlier versions of Geopak. Civil Geometry will highly likely to be used to model intersections for SS3 and later versions.